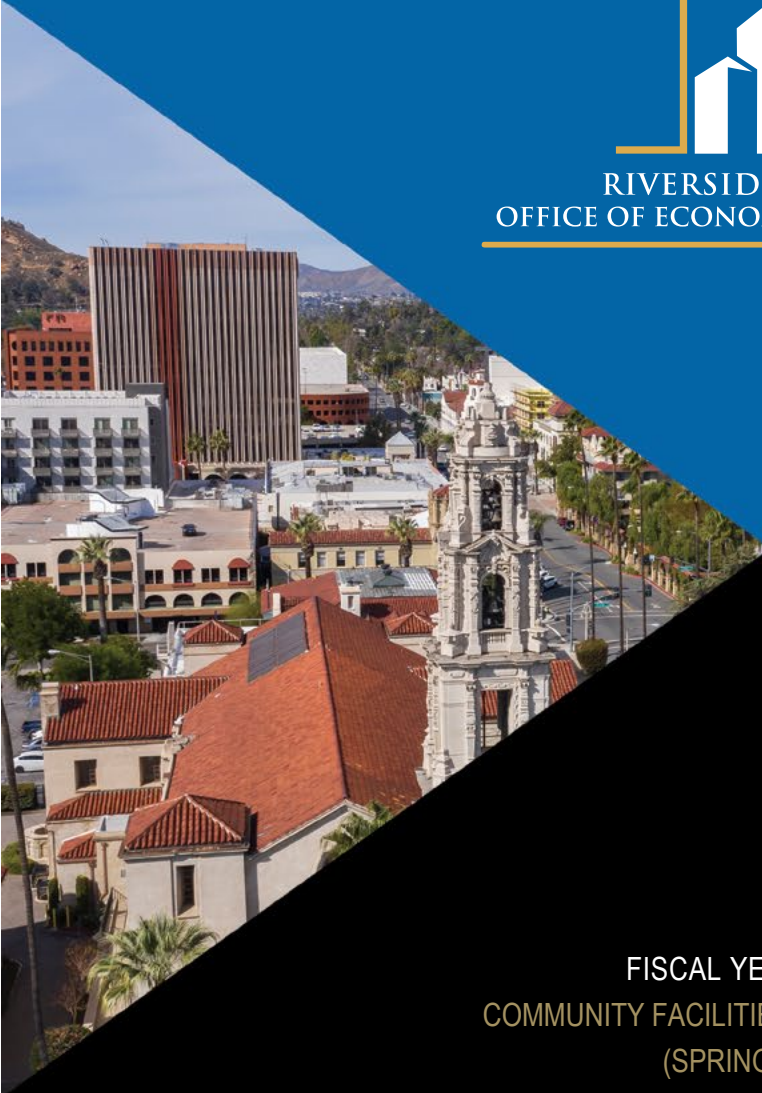


COUNTY OF RIVERSIDE

OFFICE OF ECONOMIC DEVELOPMENT



RIVERSIDE COUNTY
OFFICE OF ECONOMIC DEVELOPMENT



FISCAL YEAR 2023-24
COMMUNITY FACILITIES DISTRICT NO. 20-1M
(SPRINGBROOK)



SPICER CONSULTING
GROUP

Table of Contents

Sections

1	District Profile	1
2	Special Tax Information	1
3	Payment History	2

Tables

2-1	Maximum Special Tax Rates	1
2-2	Special Tax Breakdown	2
3-1	Delinquency Summary	2

Appendix

Appendix A – Boundary Map

Community Facilities District No. 20-1M (Springbrook)

1. District Profile

Project Description

Community Facilities District No. 20-1M (the “CFD No. 20-1M”) was formed to finance all cost attributable to maintaining streetlights, parks, and landscaping.

Location

CFD No. 20-1M comprises Tract Maps 30908 and 30909 and is generally located north of Palmyrita Ave, south of Center St, east of Garfield Ave, and west of Spring Mountain Ranch Rd. At full development, CFD No. 20-1M is projected to include 644 assessable single family residential lots/units. For a more accurate description of CFD No. 20-1M please see the Boundary Map in Appendix A.

Bond Profile and Principal Amount of Bonds Outstanding

CFD No. 20-1M is a non-bonded district.

2. Special Tax Information

Special Tax

The amount collected each year is determined by the Special Tax formula and can vary from year to year, but shall not exceed the maximum authorized (or permitted) Special Tax rates. The amount levied for Fiscal Year 2023-24 tax year is \$752,605.84. The Maximum Special Tax rates for Fiscal Year 2023-24 are as follows:

On each July 1, commencing July 1, 2022, the Maximum Special Tax for Developed Property, Approved Property, and Undeveloped Property shall be increased annually based on the percentage increase in the Consumer Price Index with a maximum annual increase of six percent (6%) and a minimum annual increase of two percent (2%) of the Maximum Special Tax in effect in the previous Fiscal Year. The Consumer Price Index rate for Fiscal Year 2023-24 is 4.56%.

*Table 2-1
Maximum Special Tax Rates*

Land Use Category	Taxable Unit	Maximum Special Tax
Single Family Property	Dwelling Unit	\$1,311.16
Multi-family Residential Property	per Acre	\$6,573.54
Non-Residential Property	per Acre	\$6,573.54
Approved Property	Dwelling Unit	\$1,311.16
Undeveloped Property	per Acre	\$6,573.54

Table 2-2
Special Tax Breakdown

Land Use Category	Parcels	Levied Amount	Maximum Special Tax	% of Maximum Special Tax
Single Family Property	574	\$752,605.84	\$752,606.69	100.00%
Approved Property	70	\$0.00	\$91,781.30	0.00%
Total	644	\$752,605.84	\$844,387.99	89.13%

3. Payment History

Delinquencies are calculated through June 2023 and may reflect parcels that may already be on a payment plan.

Delinquency Rate for Fiscal Year 2022-23

As of June 2023, the delinquency rate of CFD No. 20-1M for Fiscal Year 2022-23 is 0.39%.

Information Concerning Delinquent Parcels

CFD No. 20-1M delinquency information as of June 2023 is illustrated in Table 3-1 below:

Table 3-1
Delinquency Summary

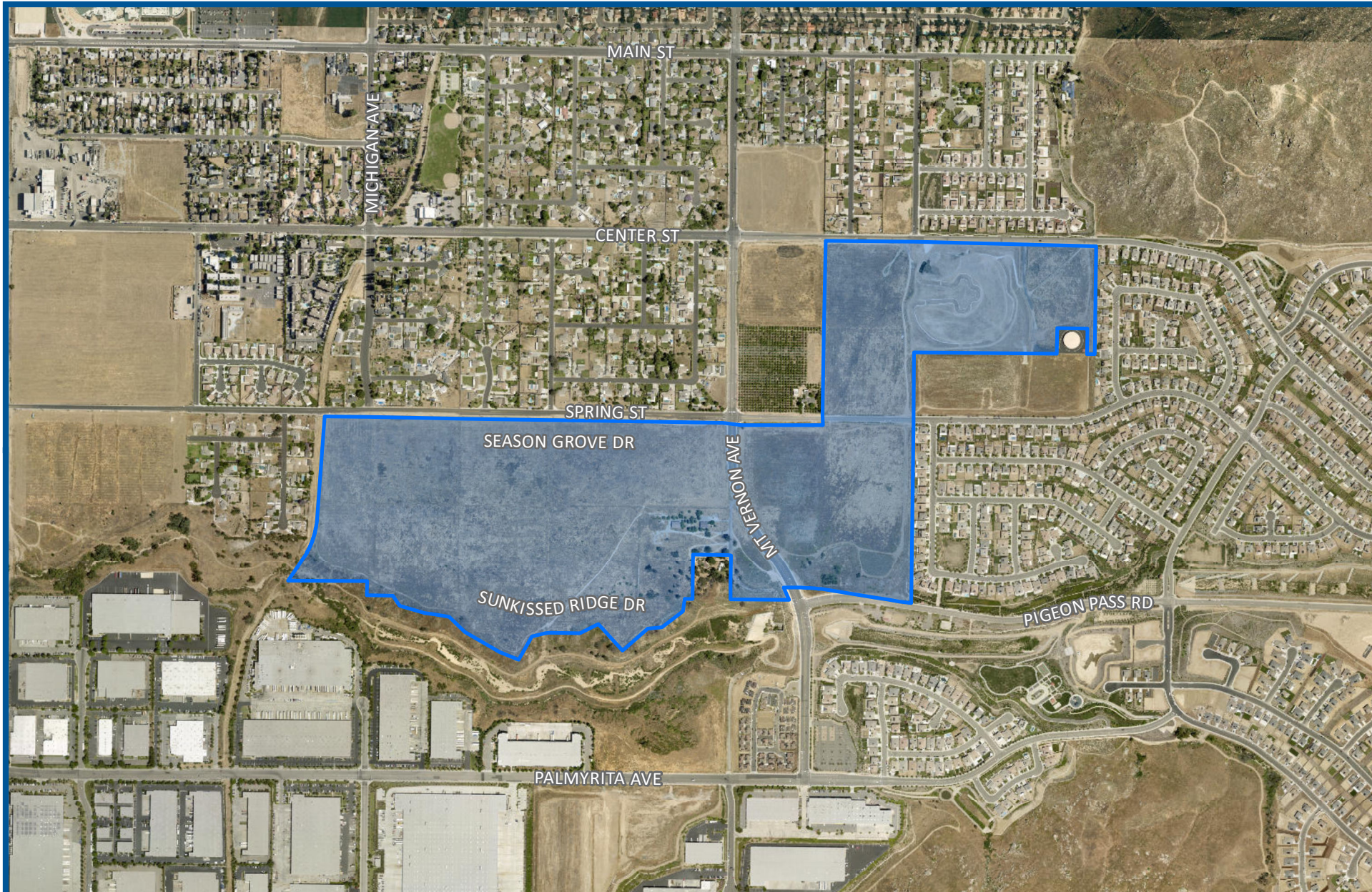
Fiscal Year	Levied		Delinquency		
	Parcels	Amount	Parcels	Amount	Del. Rate
2022-23	644	\$807,563.12	3	\$3,134.95	0.39%
Total		\$807,563.12	3	\$3,134.95	0.39%

APPENDIX A

Boundary Map



SPICER CONSULTING
G R O U P

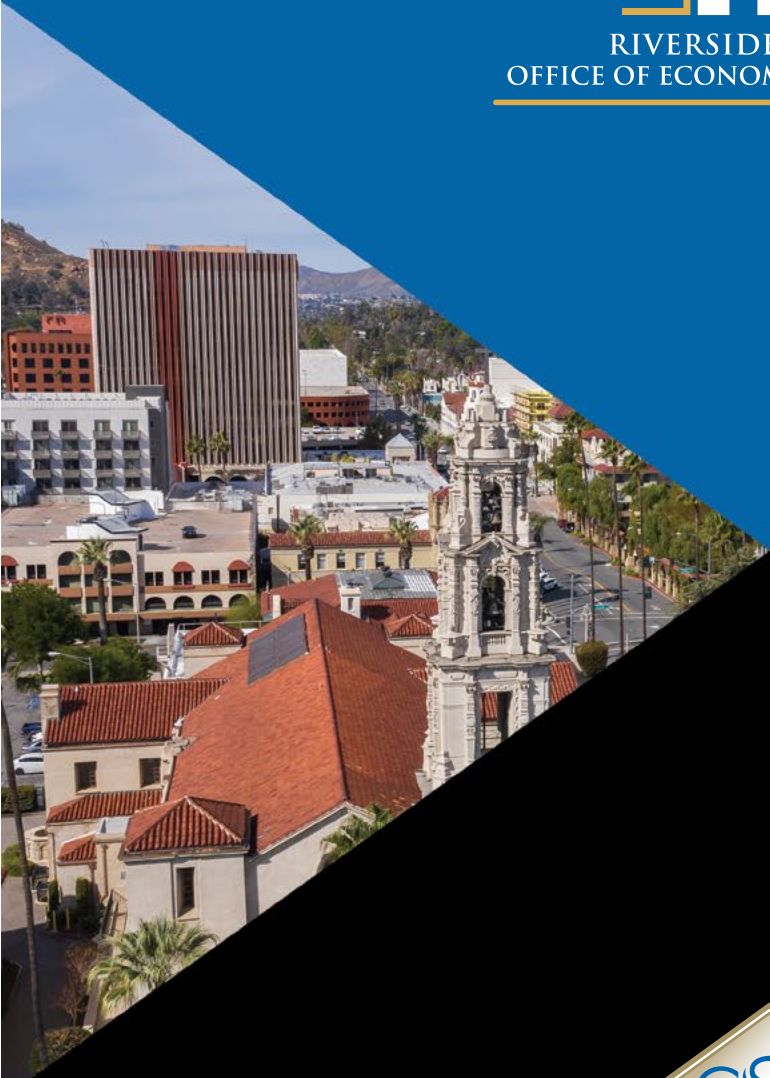


BOUNDARY MAP

COMMUNITY FACILITIES DISTRICT NO. 20-1M
(SPRINGBROOK)



RIVERSIDE COUNTY
OFFICE OF ECONOMIC DEVELOPMENT



SPICER CONSULTING
GROUP